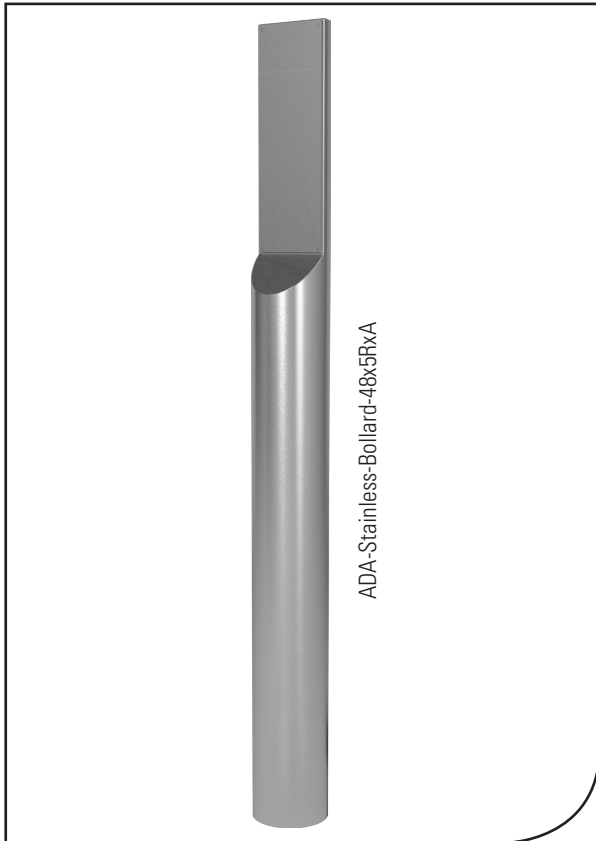


ARCHITECTURAL ROUND BOLLARDS



PRO Features:

- 1) Brushed #4 Finish (180 grit)
- 2) #304 Stainless Steel
- 3) Heavy duty 5" round tube x .134" wall
- 4) Tapered top
- 5) Mirror-finished edges
- 6) Removable, flat face plate
- 7) Mounted from inside the access panel on the back
- 8) Includes carriage bolts (4) and nuts (4)
- 9) Boxed individually
- 10) Customizable dimensions and colors available upon request

Models

Model #	Height	Color Code	Weight	Box Size
ADA-Stainless-Bollard-48x5Rx4	48"	Brushed #4 Stainless Black Wrinkle White ^{UPF} Yellow ^{UPF} Anodized Aluminum ^{PF} Oil-Rubbed Bronze ^{PF} Bright Argent Metallic ^{PF}	35 lbs.	8x6x52
ADA-Stainless-Bollard-48x5RxP	48"		35 lbs.	8x6x52
ADA-Stainless-Bollard-48x5RxS	48"		35 lbs.	8x6x52

*other heights available by special order

^{PF} Premium Finish, ^{UPF} Upgraded Finish - additional costs apply

Custom "RAL" colors
*additional lead time



Description:

A beautifully brushed stainless steel bollard for decorative entryways, glass lobbies, Class A spaces, and premium clients. Meant to mount card readers, door stations, cameras, intercoms, keypads, entry/exit buttons, biometric readers, and other access control devices. Most often installed for aesthetics in high-end applications.

The pedestal comes with a flat front face, including a removable face plate for your access control device(s). Additional cutouts or modifying the existing cutout is available for an additional charge.

No fasteners can be seen after installation - this pedestal is mounted from

the inside out using an access panel on the backside. Whereas a competing bollard will begin to wobble shortly after the initial installation (using a light weight 2-piece anchor-bollard design), this heavy duty stainless steel pedestal will hold steady regardless of the use and abuse because of its one-piece design and its .25" thick base plate that mounts securely against the floor.

Stainless steel pedestals are sought mainly for rust protection and beauty and this pedestal delivers without an exorbitant cost.

Pedestal PRO leads the industry in quality.

Related Items

48" Stainless 4x4 Tower



Model # ADA-Stainless-Tower-48x4x4

48" Stainless 4x6 Tower



Model # ADA-Stainless-Tower-48x6x4

Stud Anchor Kit



Stud Anchor Kit

L-Bolt Kit



L-Bolt Kit

Also Available:

Carbon Steel, Powder Coat Finish, and Square or Rectangle Options

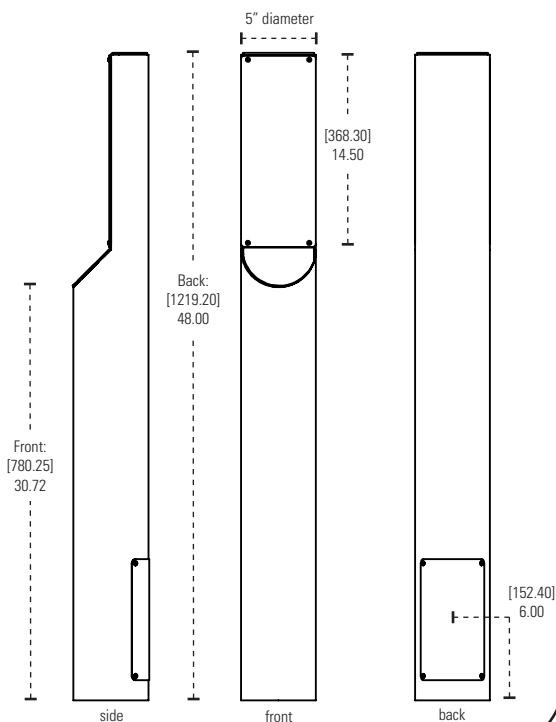
1-800-660-3072
info@PedestalPRO.com
947 W 500 N, Ste 101
Lindon UT 84042
www.PedestalPRO.com

ARCHITECTURAL ROUND BOLLARDS

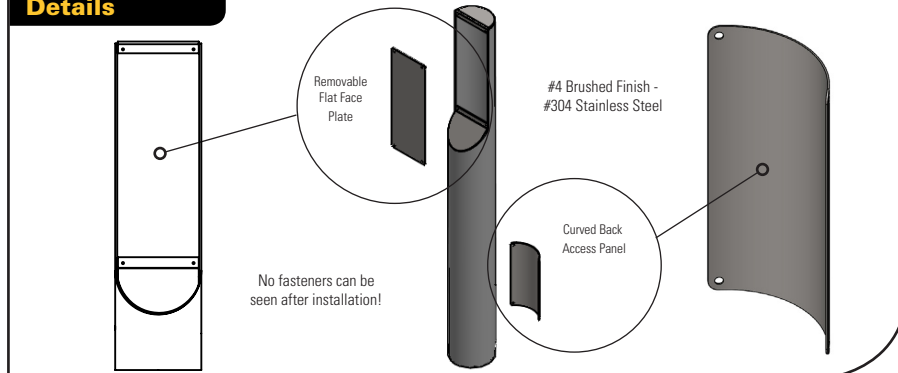


Dimensions

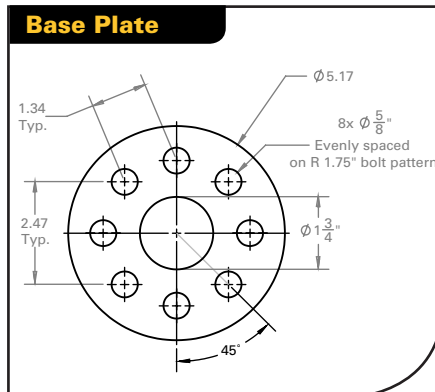
[mm]
inches



Details



Base Plate

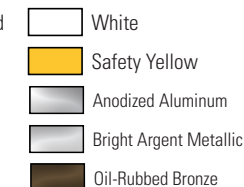


Customize

Stock Colors



Readily Available Colors*



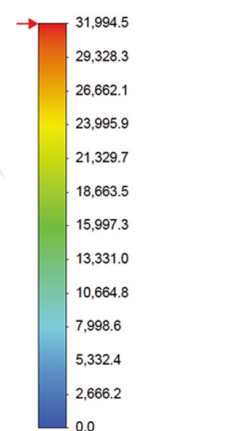
Custom "RAL" colors*

Custom heights, widths, and cutouts available to meet your needs*
*additional costs and lead times may apply

Stress Test

Wind Speed: 200 mph (321 km/h)
Wind Force: 1.3333 psi
Face Area: 263.5959 in² (each square inch receives 1.3333 psi for a total of 351.34 psi)
Max Deflection or Displacement: The top corner displaces 0.8 (etc) mm
Max Stress: 6965.5 psi
Yield Strength: 89,984.6 psi (strength at which the material bends permanently)
Interpretation: The highest recorded sustained wind is 217 mph. At 200 mph, the top of the pedestal would move .8 mm without bending permanently. In the real world, the concrete or the mounting bolts and nuts would be fail first, not to mention the electronics would blow off even sooner.

von Mises (psi)



→Yield strength: 31,994.5



PedestalPRO - 1.800.660.3072 - 947 W 500 N, Ste 101, Lindon, UT 84042
www.pedestalPRO.com



Pedestal PRO is a Registered Trademark of Pedestal CEO
© Pedestal CEO, LLC - All Rights Reserved