



**WHEN THREATS ARE BIGGER,  
GET TOUGHER AND SMARTER**

**ABLOY® PROTEC<sup>2</sup> CLIQ®**





# IT'S TIME TO THINK CRITICALLY ABOUT YOUR POWER INFRASTRUCTURE

*An uninterruptable power supply is essential to public safety, national security, and every sector of the economy.*

The utilities industry is challenged by mounting security threats. Access is made harder to control by the fact that generators require a wide variety of power substations, intake sub stations and associated sites, and thousands of miles of transmission lines. This isolation makes them vulnerable to attack.

Making matters more difficult, service and maintenance needs of this infrastructure means key management can

be a challenge. Employees and third-party contractors travel to remote sites with keys, hoping that they work on the locks. And hoping that the key is being put back in the right place.

## **THREATS ARE MORE FREQUENT AND MORE SOPHISTICATED**

Hostile nation-states, disgruntled employees, and organized crime have increasingly sophisticated means to gain access. Industrial control systems are being targeted more frequently. As the electrical grid becomes more connected with cloud-based energy management and distributed resources, gaining access to one part of the grid can have far-reaching consequences.





**NERC**

NORTH AMERICAN ELECTRIC  
RELIABILITY CORPORATION



## REGULATIONS ATTEMPT TO AVERT THREATS

In response, the federal government called for the industry to develop some standards and begin regulating itself. The North American Electric Reliability Corporation (NERC) was created to do just that. This non-profit international regulatory authority has the objective to identify what the utility industry needs to protect their infrastructures. NERC formed the Critical Infrastructure Protection Committee (CIPC) to help advance the physical security and cybersecurity of the critical electricity infrastructure of North America.

## ACCESS CONTROL REQUIREMENTS

NERC regulations require that an access control system be in place so that keys can be controlled and use tracked. Failure to meet regulations can result in costly fines. Worse, failure to control access could result in breaches, which is even more costly and risks damage to the electrical grid. Responsibility is placed on the utilities provider, therefore high-security locking solutions have become an essential requirement.





## CONTROL ACCESS FROM ANYWHERE WITH **ABLOY® CLIQ®**

*The power to meet NERC regulations and secure control access is within your grasp.*

ABLOY offers a common-sense solution for security and compliance that has proven its capabilities and cost-effectiveness. CLIQ is a mechatronic locking solution that combines the highest standards of electronic and mechanical security. It is comprised of the following: keys, cylinders and padlocks, software and key programming devices.

### **FULLY WIRELESS SETUP**

Keys and cylinders communicate through a wireless connection, and the keys contain replaceable batteries

which power both the key and the cylinder when the key is inserted. This provides many advantages over wired systems in terms of convenience and cost-effectiveness. Because there is no cabling needed nor the need to visit the cylinders to maintain batteries, installation in remote settings presents no problems.

### **A SCALABLE HIGH-SECURITY SOLUTION**

CLIQ is fully scalable and can be configured to suit smaller installations right through to large-scale solutions with locking points spread out over a wide geographic area. The range includes cylinders for doors, gates, windows, machine guards, equipment enclosures, elevators, and many other structures both internally and externally. All told, CLIQ is the ideal solution for utility companies to satisfy regulations while also making their overall security more efficient and cost-effective.



**ADMINISTRATION**



**CERTIFICATION**



**SCHEDULED  
ACCESS RIGHTS**

**CLIQ®**

## THE ADVANTAGES OF CLIQ



**ROBUST AND  
RELIABLE LOCKING  
SYSTEM**



**REMOTE PROPERTY  
AND EQUIPMENT  
SECURITY**



**KEY  
MANAGEMENT**



**ABLOY® CLIQ®  
WEB MANAGER**



### ADMINISTRATION

Administer the system anytime and anywhere. Tailor access rights of every key, down to the point where it can only open certain locks at certain times. The entire system is controllable through the cloud-based CLIQ Web Manager



### KEY MANAGEMENT

Improved security due to flexible access. The right person gets access at the right time, minimizing risks associated with lost keys. Any CLIQ key can be de-authorized immediately.



### CERTIFICATION

System devices are certified to meet requirements of local markets.



### REMOTE PROPERTY AND EQUIPMENT SECURITY

Property and equipment in remote locations can be programmed and secured using the same CLIQ system as in the office. Employees no longer have to carry around a large collection of keys.



### ROBUST AND RELIABLE LOCKING SYSTEM

Designed specifically to secure critical infrastructure and high security premises.



### SCHEDULED ACCESS RIGHTS

Flexible management of access rights and schedules for keys, doors, and users. Time-stamped audit trails can be generated for any lock or key.



### ABLOY® CLIQ® WEB MANAGER FOR EASY MANAGEMENT

Browser-based access control for locks and keys. The administrator and the user do not have to be in the same physical location to update access.





# THE SMARTEST ELECTROMECHANICAL SYSTEM AROUND IS ALSO THE TOUGHEST

ABLOY® high security products are chosen worldwide for sensitive applications in the most exposed locations, withstanding the most extreme of climates on land and sea. They are used extensively within high risk, high value industry sectors as well as by infrastructure, government and defense end users. ABLOY® PROTEC<sup>2</sup> furthers this technology with unique design features in both locks and keys.

## DISC CYLINDERS ARE SUPERIOR

The cylinder mechanism, based on the use of rotating discs instead of springs and pins, is known by security professionals as the world's premium high security locking system. This patented disc controller structure requires a moving element in the key to mate with the cylinder internally in order to function, thus raising the difficulty of unauthorized key copying.



## MECHANICAL ABLOY® PROTEC<sup>2</sup> KEY AND CYLINDER

- Durable design without springs and pins
- Disc blocking system - patented feature that stops attempts to manipulate the discs
- Bump proof and virtually pick proof
- Unique key design prevents 3-D printing
- 1.97 billion different key combinations
- Only one key needed for each user. One key can operate a complete range of products
- Made of hardened steel and weatherproof
- Excellent master keying



**PADLOCKS**



**CABINET  
LOCKS**



**DOOR  
CYLINDERS**



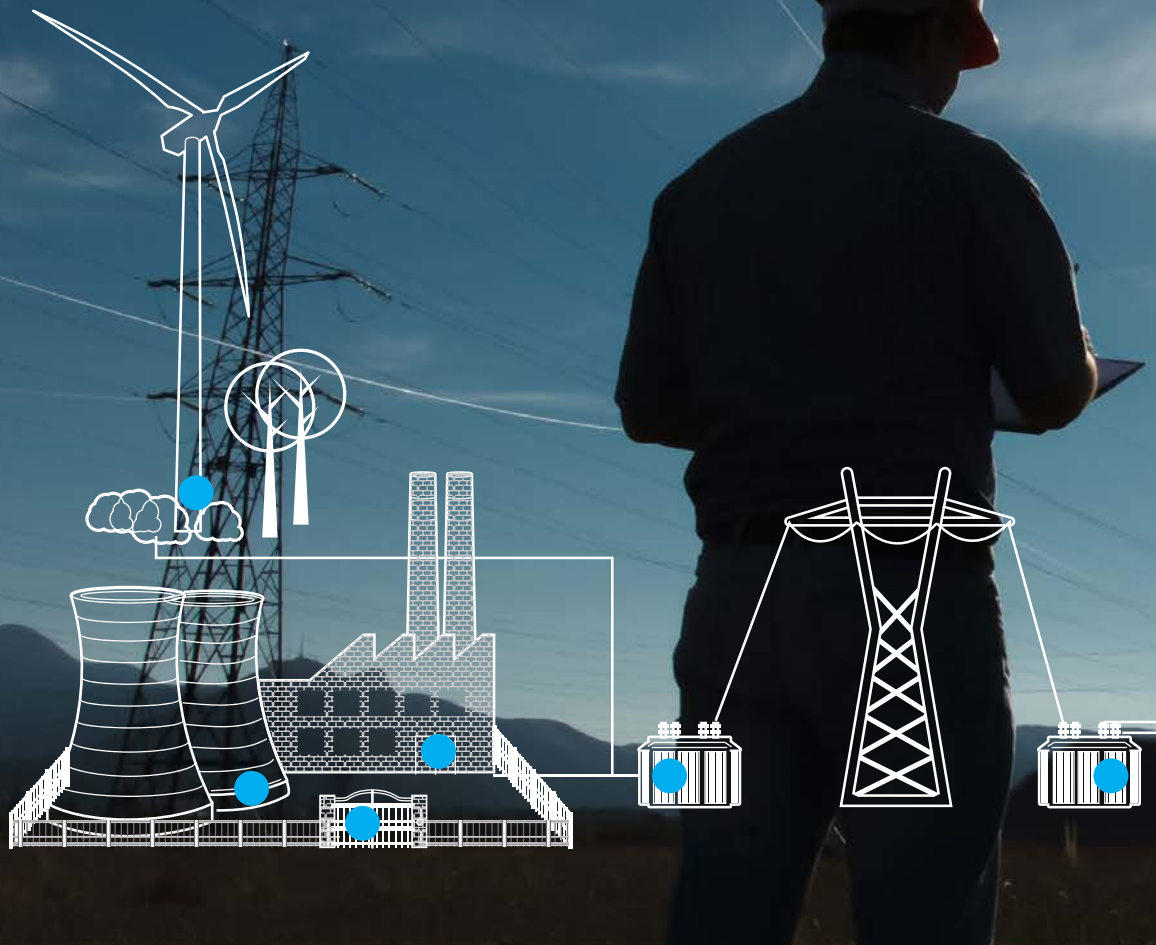
**KEY  
DEPOSITS**

*The comprehensive range of products includes padlocks, door cylinders, cam locks, cabinet locks and key deposits*

- Tested and patented
- ATEX 2 classified
- IP68 rated range of padlocks
- Robust and IP68 classified padlocks with CLIQ functionality for the harshest conditions.
- Suitable lock cylinders for every door. Available also with dust cover protection.
- Cabinet locks and cam locks with or without CLIQ.
- Key deposits for storing route keys safely.



# COUNT ON YOUR INTEGRATOR FOR COMPREHENSIVE SOLUTIONS





## SYSTEMS INTEGRATORS ARE SECURITY EXPERTS

Once you've chosen ABLOY® PROTEC<sup>2</sup> CLIQ® as your new electromechanical locking system, the next step is to work with a systems integrator. ABLOY has partnerships with qualified systems integrators all over the world that have experience providing high security solutions for critical infrastructure like yours. The integrator will work directly with ABLOY service centers to commission a customized locking solution for you in the field.

Your systems integrator understands the regulatory environment you face. They employ electrical and mechanical engineers as well as hardware and software experts. Some of them even have a full CNC department, with the ability to prototype customized solutions.

Making the most of ABLOY® PROTEC<sup>2</sup> CLIQ® isn't just a matter of ordering and installing new locks. The systems integrator will train your team on how to operate the system and utilize it for maximum benefit. Your integrator will also ensure ABLOY® PROTEC<sup>2</sup> CLIQ® works with the rest of your security apparatus.





# **ABLOY®** PROTEC2 CLIQ IS TRUSTED AROUND THE WORLD TO SECURE CRITICAL INFRASTRUCTURE

ABLOY is the world's leading developer of products in the field of electromechanical locking technology. The products are used extensively by governments, the defense industry, and industries with a heightened need for security. ABLOY PROTEC2 CLIQ provides exceptional double-secured access control to critical infrastructure.





# WE'VE BUILT SUPERIOR LOCKS SINCE DAY ONE

The story of ABLOY started in 1907, when a young precision mechanic in Helsinki, Finland named Emil Henriksson had the idea to use rotating discs in lock cylinders. The invention was patented in 1919, and ABLOY was founded and trademarked to produce the locks. Rotating disc cylinder technology is regarded the world over as a superior locking system to pins and springs.

ABLOY's commitment to R & D, testing, and solving problems has resulted in a product lineup at the highest level of the lock industry. Guided by a mission to help people feel safer and more secure, ABLOY is recognized as one of Finland's most respected brands around the world.

Learn more about ABLOY at [abloyusa.com](http://abloyusa.com)





# LOCK IN COMPLIANCE FOR YOUR CRITICAL INFRASTRUCTURE

CONTACT US AT 800.367.4598 OR VISIT [ABLOYUSA.COM](http://ABLOYUSA.COM)



ABLOY secures people, property, and business operations on land, at sea, and in the air – in all circumstances.

ASSA ABLOY is the global leader in door opening solutions, dedicated to satisfying end-user needs for security, safety and convenience.

Wahlforssinkatu 20  
P.O. Box 108  
FI-80101 Joensuu | Finland  
Tel. +358 20 599 2501  
[WWW.ABLOY.COM](http://WWW.ABLOY.COM)



ABLOY Security  
6005 Commerce Drive #330  
Irving, TX 75063  
Tel. 972 753 1127  
800 367 4598  
Canada: +1 514-335-9500  
[info@abloyusa.com](mailto:info@abloyusa.com)  
[WWW.ABLOYUSA.COM](http://WWW.ABLOYUSA.COM)

An ASSA ABLOY Group brand **ASSA ABLOY**

Abloy Oy develops continuously the products and solutions offered. Therefore, the information contained in the marketing materials is subject to change without notice.

8801402 3/2019 3000 kpl Punamusta Oy, Joensuu