

Access Control Software

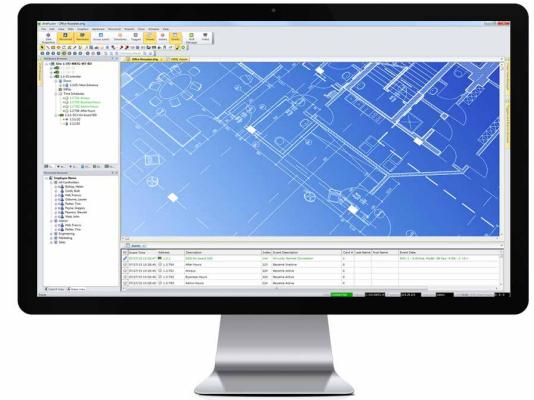
DNA Fusion

Overview

DNA Fusion delivers a complete and scalable access control solution for any organization ranging from the multi-campus enterprise to a single lobby entrance. DNA Fusion takes full advantage of the distributed network architecture model and open platform control panels allowing organizations to monitor and manage several integrated systems through a single common interface..

Software Architecture

DNA Fusion is developed using the latest Windows technology and utilizes a combination of both native and managed technologies to maximize speed as well as productivity. DNA Fusion takes full advantage of Visual Studio's C++ and .NET tools and leverages Microsoft's remoting technologies to communicate securely across the network. Microsoft SQL Server is employed for the DNA Fusion database to permit easy connectivity, management, and synchronization across other business systems.



✓ KEY FEATURES

- Intuitive fully customizable graphical interface
- InfoReady reporting system
- Advanced graphic maps
- Personnel & credential management
- Photo verification on events
- Segmented database (tenants)
- Easy drag and drop throughout
- Powerful video, elevator, biometric, and wireless lock integrations
- Photo ID production
- Triggers and Macros
- Auto e-mail alarms and events
- Database import/export/sync
- Authentic Mercury hardware
- FIPS 201 Compliance



DNA Fusion

PC Specifications for DNA Fusion

NOTE: The following minimum specifications are meant to serve as a baseline to configuring the DNA Fusion system and do not take into account all the variables of your system. These recommendations are based on the current release version of DNA Fusion and are subject to change without notice.

Recommended Minimum Server Specifications

Enterprise Server / SQL Server¹ (> 20 doors / > 5 clients)

Processor:	Intel Core i5 2.8 GHz + (or equivalent, multi-core)
System memory:	8 GB
Disk space:	500 GB
Display:	Support for 1024x768 or higher/512 MB VRAM
NIC:	10/100 Ethernet
OS:	Windows 2012 R2 Server, Windows Server 2016, Windows Server 2019

1-SQL Server provided by customer

NOTE: RAID hardware configuration and backup medium recommended for Enterprise servers.

Corporate Server / SQL Express¹ (< 20 doors / < 5 clients)

Processor:	Intel Core i5 2.8 GHz + (or equivalent)
System memory:	4 GB
Disk space:	250 GB
Display:	Support for 1024x768 or higher/256 MB VRAM
NIC:	10/100 Ethernet
OS:	Windows 2012 R2 Server, Windows Server 2016, Windows 10 (32 and 64 bit support), Windows Server 2019

1-SQL Server Express 2012 included / 10 GB database limit

IMPORTANT! DNA Fusion is NOT supported on home or mobile versions of Windows OS.

Recommended Client Specifications

Client / Photo ID Client¹

Processor:	Intel Core i3 2.4 GHz + (or equivalent)
System memory:	4 GB
Disk space:	250 GB
Display:	Support for 1024x768 or higher/512 MB VRAM
NIC:	10/100 Ethernet
OS:	Windows 10 (32 and 64 bit support)

1- Photo ID Clients should have required ports (USB, serial, etc.) for any external capture or printing devices.

Network Requirements

- Vanderbilt strongly recommends that all computers running DNA Fusion are connected on a Windows domain.
- DNA Fusion may be ran across different domains provided a bi-direction trust is in place between domains.
- If configuring in a Windows workgroup, all computers running DNA Fusion must be members of single dedicated workgroup. This configuration is less secure than a domain.

VANDERBILT

vanderbiltindustries.com

@VanderbiltInd

Vanderbilt Industries

Vanderbilt Industries

2 Cranberry Road

Parsippany, NJ 07054

973 316 3900

an **ACRE**
brand
20010-1120